



**Dr Wassiliki**, Dentist

**Dr Mayumi**, Dentist, DMG

**Steffen**, DT

We are the software  
and hardware  
**dream team...**

Our DentaMile range and workflow

Britta, ZTM, DMG

Matthias, DT

Dr Juliane, Dentist

Dental dreamwork: our solutions for dental clinics and laboratories are no dream, but an everyday reality.

## The DentaMile Principle. **Fast. Intuitive. Validated.**

Whether just getting into digital or already experienced in 3D: DMG's DentaMile makes it easier than ever to take advantage of dental 3D printing. Dental clinics and laboratories turn into a dental dream team through your very own digital workflow.

Flexible, **fast** and **well** connected.

With DMG DentaMile, you decide for yourself how to use the digital workflow – even without your own 3D printer.

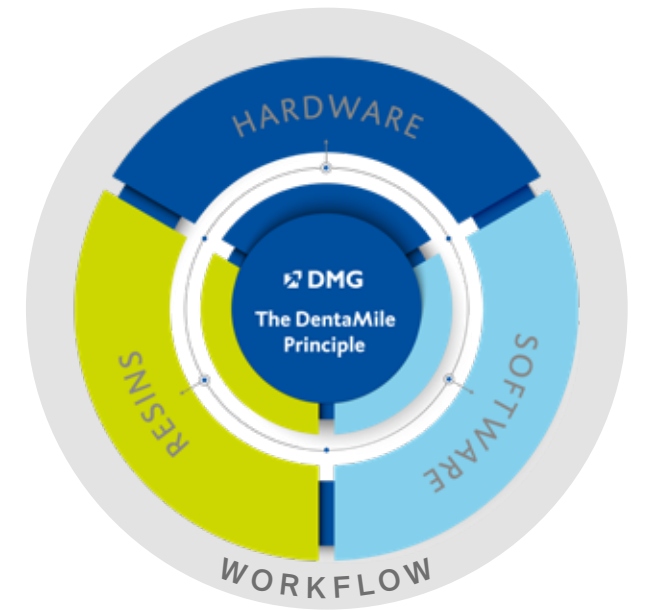
Want to manufacture precise bite splints, dental models or customised bleaching trays with 3D printing – in a quick, easy and economically efficient way? With the DentaMile connect software and the validated workflows, it's no problem. You can design and print the objects yourself or delegate them to a partner with whom you are networked in the cloud.

The DentaMile network opens up new and economically convincing possibilities.

**It's a match!**

### **3D** from a single source.

An integrated approach: The DMG DentaMile portfolio offers you all components for modern 3D dental printing from a single source. From the award-winning cloud-based software DentaMile connect, via high-performance 3D printers and post-processing units, to high-quality materials for a wide variety of applications.



### Benefits for the practice:

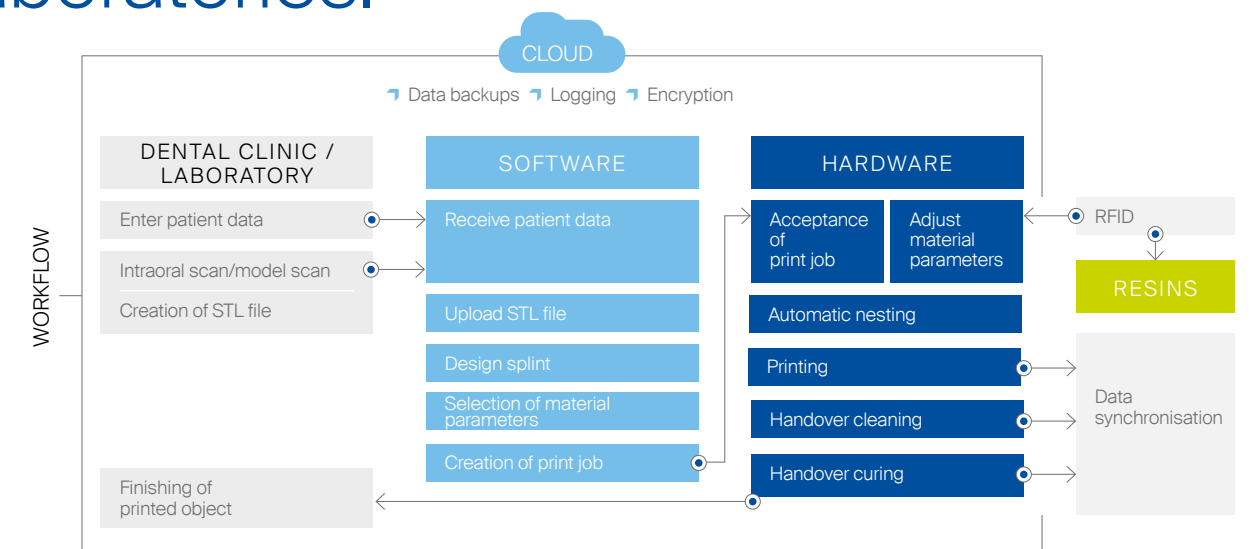
- Economical, quick work.
- Simple networking with cooperation partners.
- Simple integration of already existing design software.

### Benefits for the laboratory:

- Simplification of your own processes and procedures.
- Simplified access thanks to a digital process.
- Simple integration of already existing design software.



## DentaMile workflows: **concrete advantages** for dental practices and laboratories.



## Validated and efficient: DentaMile workflows for models, bleaching and bite trays.

Do you want to manufacture bleaching trays with precise edge seals that keep the bleaching gel on the tooth, along with custom-fit bite splints and models, using a 3D printing process? Want to work with the best dentists and laboratories with speed and efficiency? No problem. DentaMile connect and validated DentaMile workflows help you optimise workflows and link up with qualified partners to achieve results with even greater precision. The validated processes guarantee the reliable quality of the printed items.



### Simplified working

To the printed item in just a few steps, with simple, intuitive handling. Precise design becomes easier than ever.



### Save time and money

Slimline workflows ensure high cost-effectiveness, allowing many steps to be delegated. A significant amount of work and material costs are saved in comparison to the conventional method of production.



### Smooth workflows between dental practices and laboratories

DentaMile connect software and your workflows are cloud-based. This makes the exchange between all parties involved faster, easier and spatially independent.



### Compatible with existing digital workflows

DentaMile workflows have an open design. Existing design software or hardware components can be easily integrated into the model workflow, for example.



### Benefit from being well networked – with or without your own 3D printer

You decide how you want to participate in the digital workflow - even without your own printer. Network successfully, delegate print jobs, receive print jobs - not a problem.



### Easy uploading and transfer of data

With the File Transfer function, STL files can be easily and quickly uploaded and downloaded in a secured environment - also as a package, with direct assignment to the specific case.



### 3D from a single source, including material

The DMG DentaMile portfolio comprises all components for a validated digital workflow that is suitable for everyday life. Perfectly coordinated from a single source, including suitable material, high performance 3D printers and post-processing units.



Smooth processes and perfect teamwork with the ideal partners – all via the cloud. **It's a match!**

## The cloud-based software.

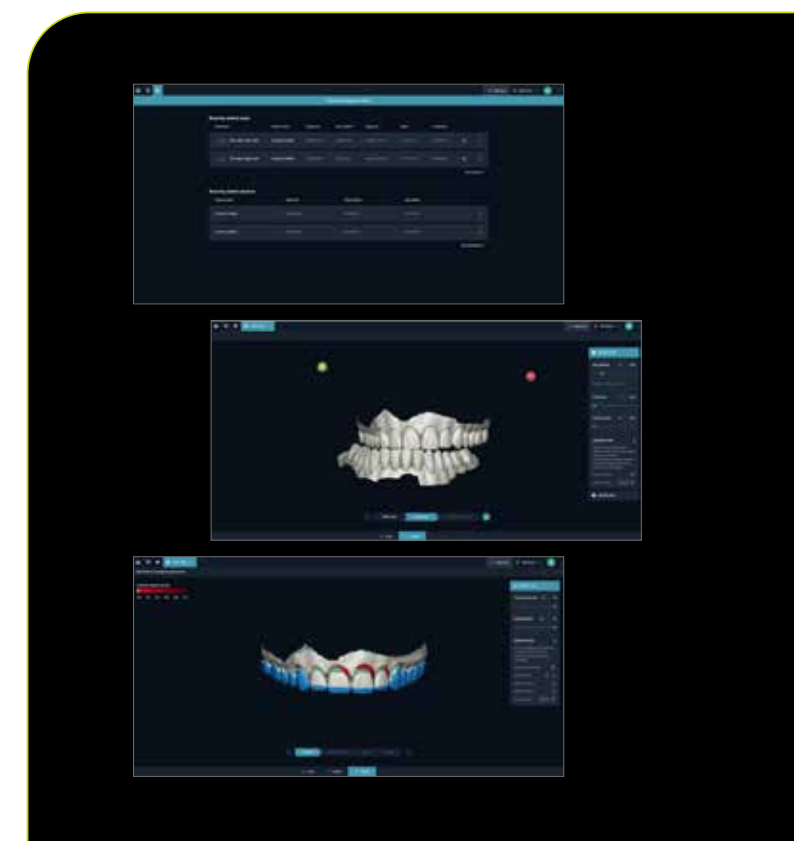
DentaMile connect facilitates the simple networking of all parties involved in the production process, with no spatial or technical barriers. Digital dreamwork: easy and efficient. The cloud-based software developed by DMG thus so simplifies 3D printing that the technology can easily be completely integrated into everyday work. DentaMile connect also ensures that the workflow in medical device manufacturing is secured and can be validated. Errors are minimised and new applications are made accessible without requiring any additional technical effort.

**We bring the best dentists together with the best dental technicians. For long-term workflow partnerships between dental practices and laboratories.**

## Speed with the highest level of precision.

Printing your own 3D models? Networking with a dentist or a partner laboratory? Would you like to just scan, or design digitally too? No matter how, you can participate in the digital workflow – even without your own 3D printer.

The flexible usage model of the DentaMile connect software offers you all possibilities with the 4 usage options "Creator", "Creator Plus", "Designer" and "Producer". You decide what you want to do and which option is right for your needs.



### Example applications

- | Patient data dashboard
- | Fully adjustable virtual articulator
- | Determining the margin line



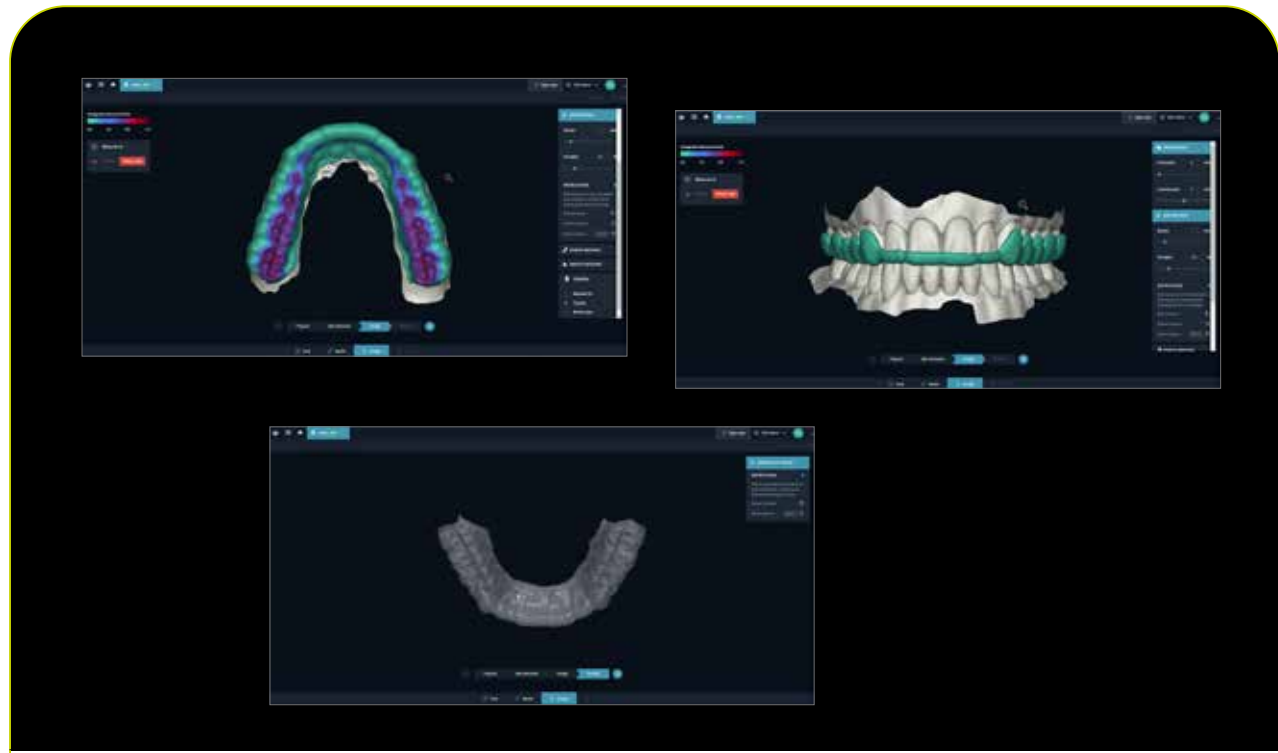


### Product advantages:


- Encryption of patient data with the latest cloud technology from Microsoft Azure.
- Consistent logging of workflows.
- Software takes into account interactions between materials and manufacturing method.

### DentaMile connect is secure.

DentaMile connect lays the foundations for securing and validating the workflow in medical device manufacturing. Errors are minimised, while processes are traceable and meet regulatory requirements.



**Example applications**  
 | Occlusion adjustment  
 | View of tray in entire jaw  
 | Finished tray design

For more product information: 

### Overview of options with DentaMile connect:

Features included	DMc ready	Creator	Creator Plus	Designer	Producer
Creating patient data and uploading STL files	✓*	✓	✓	✓	✓
Design - workflow (including virtual articulator)	-	-	-	✓	✓
Automated 3D printing	-	-	-	-	✓
Sharing and delegating cases	✓*	✓	✓	✓	✓
Connections to other DentaMile connect users	Unlimited connections for File Transfer Producers only	Limited to one connection to a Designer or Producer licence holder	Unlimited connections to Designer and Producer licence holders	Max. 15 connections to Creator licence holders; unlimited connections to Creator Plus and Producer licence holders	Unlimited connections to Creator, Creator Plus and Designer licence holders
Cloud storage	5 GB	5 GB	5 GB	5 GB	5 GB
Free updates	✓	✓	✓	✓	✓
Service and support	✓	✓	✓	✓	✓

\* Data exchange only.

## User-friendly hardware for high-precision workpieces.

To make your work as successful and easy as possible, DMG supplies not only high-quality 3D printers as part of its 3D hardware, but also entire systems, including coordinated post-processing units. Together with the award-winning cloud-based software DentaMile connect, an efficient validated workflow is now possible for digital additive fabrication.

### DentaMile Desk MC system

All-in-one system:  
Jump straight into the world of digital dentistry.

The DMG DentaMile Desk MC system offers you everything you need for dental 3D printing in a compact format: The 3D printer, cleaning unit and post-curing unit can be placed next to one another anywhere. Plug and Play technology means you can get started straight away. Best of all, the coordinated complete system guarantees a validated manufacturing process – at all times.



#### Product advantages:

- Compact size.
- User-friendly and simple user guidance.
- Cover open on three sides for a larger working space.

3D printing from a single source



## DMG 3Demax

An all-rounder for the highest level of process reliability

DMG 3Demax is a high-precision, high-speed 3D printer for a wide range of dental 3D printing applications.

Thanks to ultrafine resolution and a generous build area, 3Demax can be used to create drilling templates, burnout casting structures, mouthguards and splints, crowns and bridges, models, and much more. The "Force Feedback" option accelerates the printing process.



### Product advantages:

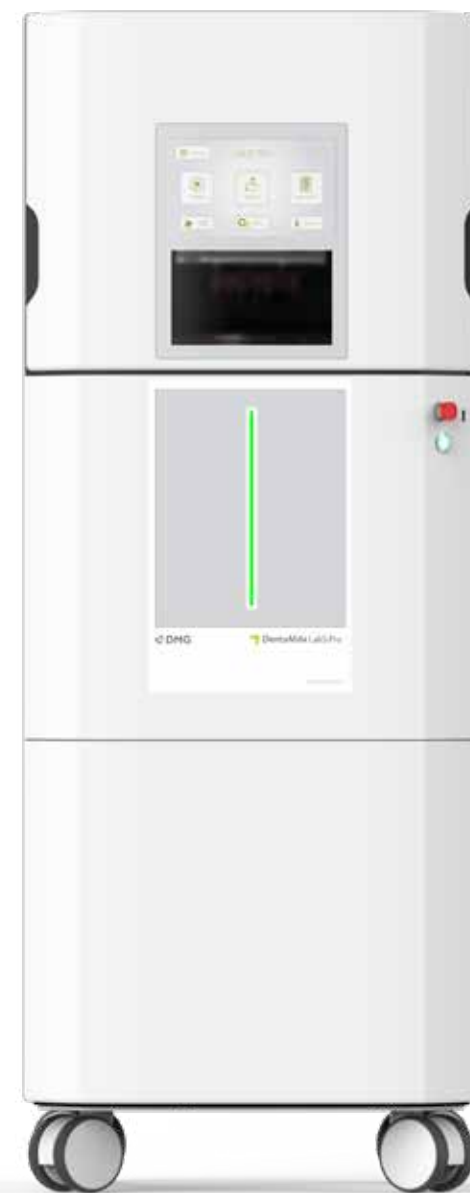
- Large build area for the simultaneous manufacturing of several workpieces.
- Security through material identification (RFID).
- Precision without compromise

## DMG 3Dewash

Cleaning unit for the systematic and standardised cleaning of printed objects according to the manufacturer's specification as part of the supported process reliability.

## DMG 3Decure

Light curing unit for final curing as part of the monitored, control process. The material-dependent curing programs ensure process reliability for the production of a medical device according to product specifications and documentation.



Automated

## DMG Lab5 Pro

The automated professional printer.

With the DMG Lab5 Pro, your printed parts are automatically separated from the build platform and collected in a basket when the printing process is complete. The next print job is immediately and automatically initiated. The resin refill unit ensures there is always enough print material available.

## DMG Lab5

The professional printer for high volumes and efficiency.

The DentaMile Lab5 is the professional 4K 3D printer you need for efficient series production. DentaMile's Lab5 printer allows cost-effective high-volume printing.

The high-precision 3D printer offers an especially large build platform, plus the option to print several print jobs automatically in succession.

### Product advantages:

- High-precision 4K light source.
- Print chamber can be heated up to 35 °C.
- Exceptionally high processing speed.

For more product information:





**LuxaPrint:**  
High quality material  
specialists in 3D  
printing.

## Best materials for ideal results.

Whatever your dental challenge is: here at DMG we are happy to assist. With high quality DMG branded products made in Hamburg – even for the demanding field of dental 3D printing. Our LuxaPrint family offers everything you could wish for when it comes to additive digital production. Pleasantly easy to handle, versatile to use and in keeping with the reliable DMG high quality. The range consists of light-curing resins for a wide variety of indications. Each one combines fast 3D printing with outstanding accuracy.

### Speed with the highest level of precision.

Faster is not always better. However, when quick printing is combined with extreme precision, work becomes significantly easier. With our LuxaPrint materials you can push the boundaries in both areas.

- **LuxaPrint Model**  
for models
- **LuxaPrint Tray**  
for individual function spoons
- **LuxaPrint Cast**  
for casting models
- **LuxaPrint Ortho**  
for drilling templates
- **LuxaPrint Ortho Plus**  
for occlusal splints
- **LuxaPrint Ortho Flex**  
for flexible splints, in two shades
- **LuxaPrint Gingiva**  
for gingival masks

### Super easy handling.

Great care has been taken in all LuxaPrint variants to ensure ease of use – both before and after printing. Production takes place quickly and precisely. The printed objects have a surface structure which is accurate in every detail and they are very easy to clean.

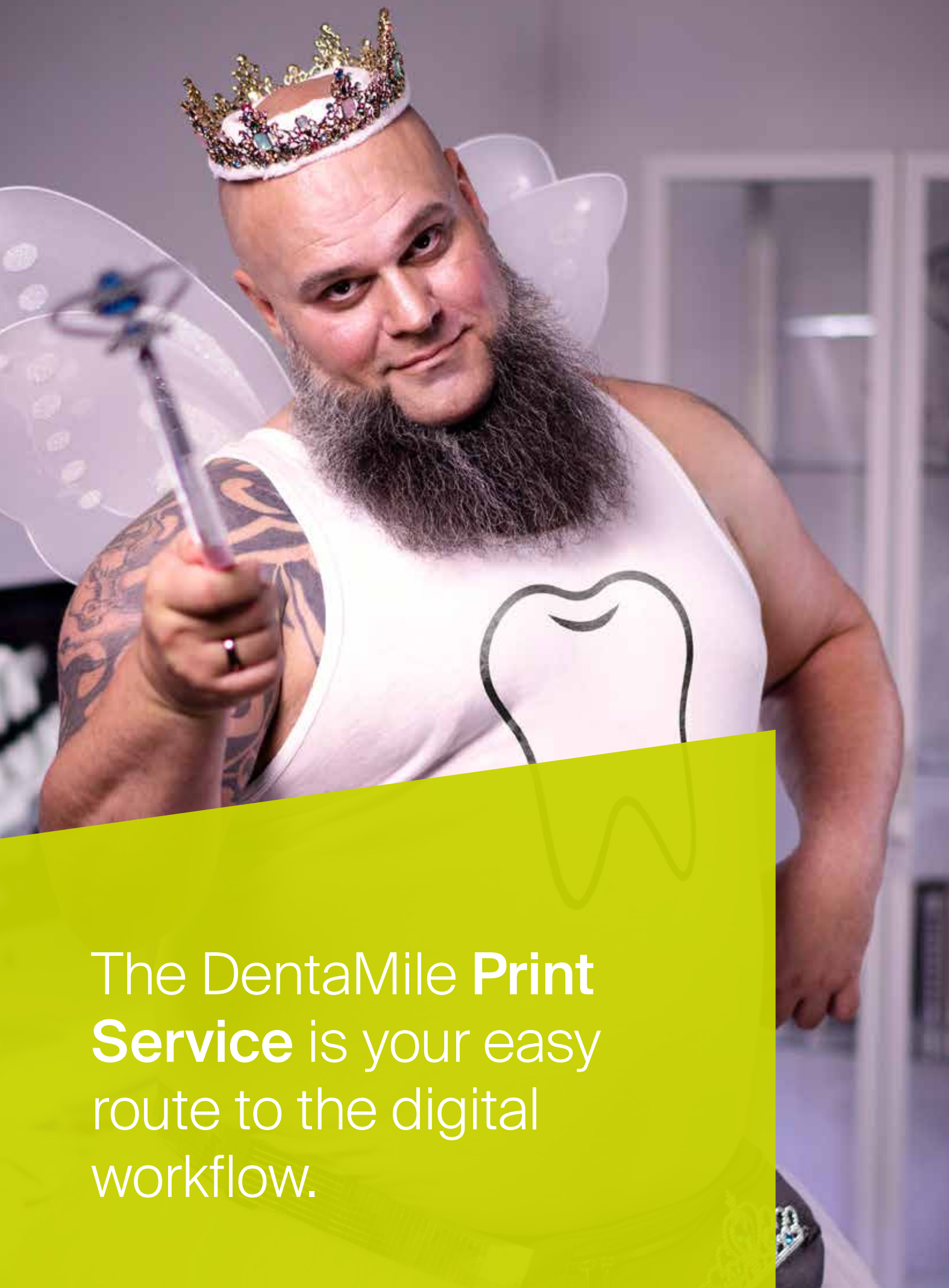
### Product advantages:

- High material quality for outstanding print results.
- Easy to use.
- Made in Hamburg.

For more  
product information:







The DentaMile **Print Service** is your easy route to the digital workflow.

## No 3D printer? No problem.

To complement our network of best dental practices and laboratories, we offer the DentaMile Print Service – your flexible partner for dental dreamwork. The service enables the 3D printing of your design files with maximum precision through the DentaMile system – ready for dispatch within 24 hours.

### Scanned, printed, delivered: the **DentaMile Print Service**.

3D printing without your own printer? As a perfect complement to the cloud-based DentaMile connect network, our in-house print service offers the creation of high-precision 3D prints from transmitted design files – ready for dispatch within 24 hours. The results are delivered as a semi-finished product and finalised in the lab or the dental practice.

- **Models**  
Implant models,  
bite splints
- **Gingival masks**
- **Trays and splints**  
Bite splints,  
bleaching trays
- **Functional trays**
- **Drilling templates**
- **Casting frameworks**  
Model casting,  
crowns,  
bridges

For more  
product information:



### Product advantages:

- Go digital without a printer.
- Fast delivery.
- Cloud-based data transfer.
- Validated printing.
- Encryption of patient data with the latest cloud technology from Microsoft Azure.





# The DMG Service Center Digital.

## Personal. Competent. Your perfect match with us.

The DMG Service Center Digital is your point of contact for all questions relating to the DMG DentaMile product solutions for the digital workflow. We know: Dental digitalisation is a complex field. At DMG, we would like to provide you with the best possible assistance in this regard.

There are various ways to contact the DMG Service Center Digital:

**Tel.:** 0800 - 84 00 66 6  
+49 40 84 00 66 66

**Office hours:** Mon-Thurs 8 am to 6 pm  
Fri 8 am to 5 pm


**Email:** [supportdigital@dmg-dental.com](mailto:supportdigital@dmg-dental.com)

Online contact form  
via QR code:



### Our digital field service experts.

Are you looking for skilled regional contacts for the digital workflow? Our specially trained "Digital Applications" field service - team will be happy to help. After all, good service is part of an efficient digital workflow.

 There to help you in person.

Find your personal experts here:





A smile ahead  
together



**DMG Digital Enterprises SE**

Elbgastraße 248 22547 Hamburg Germany  
Fon: +49. (0) 40. 84 006-0 Fax: +49. (0) 40. 84 006-222  
info@dmg-dental.com www.dmg-dental.com  
www.facebook.com/dmgdental

